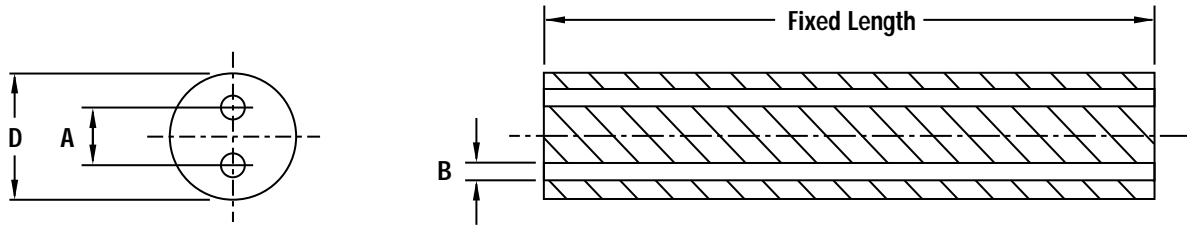


# Tungsten Carbide Preforms

## Two Straight Coolant Holes



PART #	DIAMETER	A	B	
RS40-50-20	0.625	0.197	0.079	<p>DRILL POINT</p>
RS40-62-20	0.625	0.244	0.079	
RS40-80-20	0.625	0.315	0.079	
RS44-50-20	0.687	0.197	0.079	<p>STEP BLANK</p>
RS44-62-20	0.687	0.244	0.079	
RS44-80-20	0.687	0.315	0.079	
RS48-50-20	0.751	0.197	0.079	<p>BALL NOSE</p>
RS48-62-20	0.751	0.244	0.079	
RS48-80-20	0.751	0.315	0.079	
RS52-50-20	0.812	0.197	0.079	
RS52-62-20	0.812	0.244	0.079	
RS52-80-20	0.812	0.315	0.079	
RS52-100-25	0.812	0.394	0.098	
RS56-50-20	0.875	0.197	0.079	
RS56-62-20	0.875	0.244	0.079	
RS56-80-20	0.875	0.315	0.079	
RS56-100-25	0.875	0.394	0.098	
RS60-50-20	0.937	0.197	0.079	
RS60-62-20	0.937	0.244	0.079	
RS60-80-20	0.937	0.315	0.079	
RS60-100-25	0.937	0.394	0.098	